



T-DEX 
by 



Strength Under Pressure

EX by TOMCAT



T-DEX by TOMCAT



T-DEX by TOMCAT



T-DEX

by TOMCAT

T-DEX by TOMCAT



T-DEX by TOMCAT



T-DEX by TOMCAT





T-Dex	4
Overview	
Stage Decks	6
Rectangle / Triangle / Quadrant	
Legs	8
Fixed / Adjustable / Telescopic / Screw-Jack / 4-in-1 Leg Adapter	
Handrails and Guardrails	10
Stairs	12
Crowd Barriers	14
Our Brands	15

Deck Features

T-Dex by TOMCAT is a lightweight modular stage deck system. Available in a wide range of deck shapes and sizes the system also provides various leg, handrail, guardrail, and stair options.

The standard deck is comprised of a welded aluminum truss style frame, supporting a matte black painted 11/16" (18 mm) thick plywood walking surface and uses simple and cost-effective nut and bolt connections for deck to deck and deck to accessory junctions. Multiple hardware connection holes provide connectability with other industry deck systems.

T-Dex by TOMCAT provides a minimum load capacity of 122 lbs. per square foot (600 kg/m²).





T-Dex Deck Features

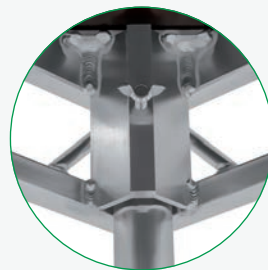


T-Dex by TOMCAT is available in a wide range of deck shapes and sizes with the most popular being the industry standard 8' x 4' (2.44 x 1.22 m) size. Each deck is finished with a matte black painted 1¹/₁₆" (18 mm) thick plywood walking surface, however other surface finishes are available including clear acrylic and aluminum grating. The plywood top can easily be user replaced, repaired, and repainted in case of damage or wear.

Each deck is provided with four leg pockets to accommodate up to a 2" (51 mm) outside diameter round leg at each corner while also providing compatibility with other tubular leg sizes such as 1¹/₂" schedule 40 pipe.

Deck to deck and deck to accessory connections are made via simple and cost-effective nut and bolts, while multiple connection holes provide connectivity with other industry deck systems.

With the 8' x 4' deck weighing only 106 lbs. it is almost 1/3 lighter than existing steel decking systems yet providing system connectivity and similar loading capabilities.



Leg pocket system



Deck top fixing

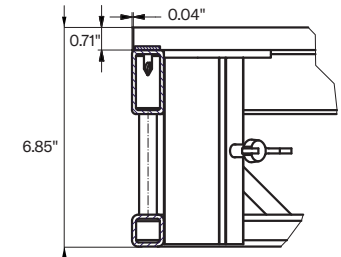
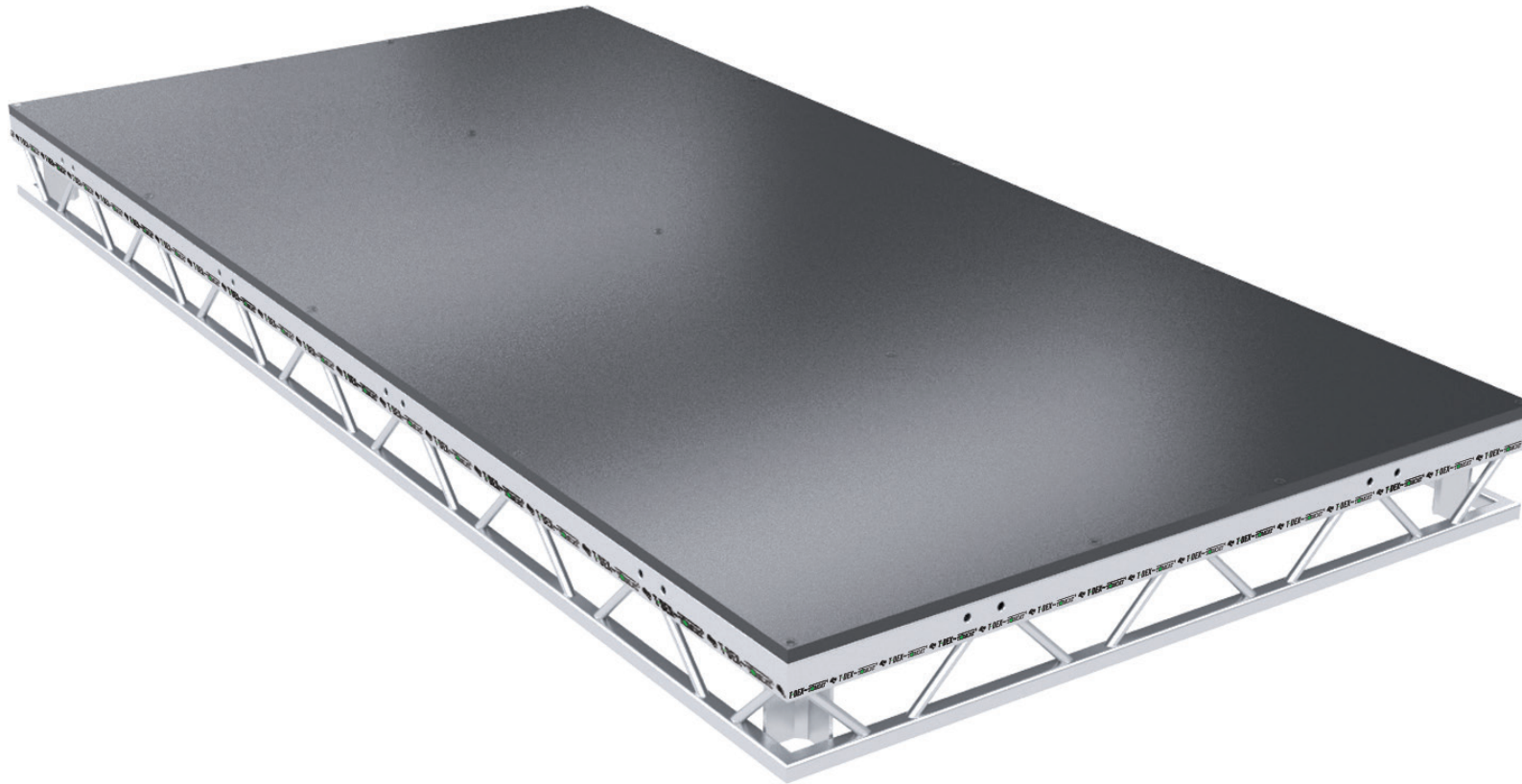


Cross section of profile

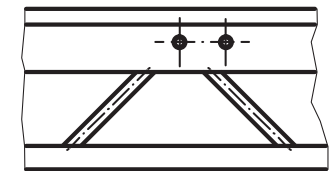


Deck connection point

Stage Decks

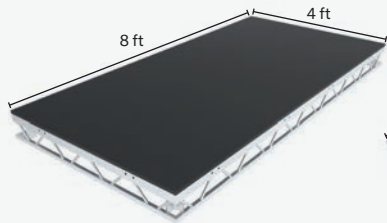


Cross section of profile



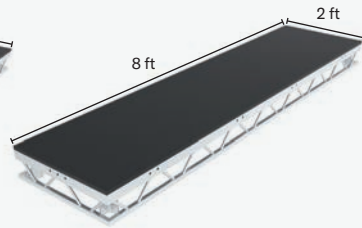
Deck connection point

ITEM CODE	DECK SIZE	HEIGHT OPTIONS	MAX. UDL	DECK TOP	SELF WEIGHT	STORAGE HEIGHT	DECK MATERIAL
TC TDB8X4	8' x 4' (2.44 x 1.22 m)	8"- 48" (200-1220 mm)	122 lbs/ft ² (600 kg/m ²)	0.71" (18 mm)	106 lbs (48 kg)	6.85" (174 mm)	Painted Plywood



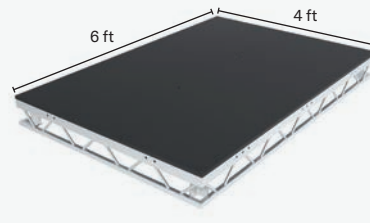
DECK 8'X4'

ITEM CODE	DESCRIPTION	WEIGHT
TC TDB8X4	Plywood 8' x 4' (2.44 x 1.22 m)	106 lbs. (48 kg)



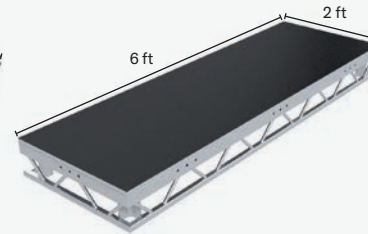
DECK 8'X2'

ITEM CODE	DESCRIPTION	WEIGHT
TC TDB8X2	Plywood 8' x 2' (2.44 x 0.61 m)	64 lbs. (29 kg)



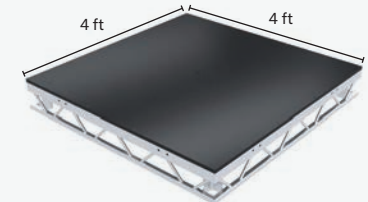
DECK 6'X4'

ITEM CODE	DESCRIPTION	WEIGHT
TC TDB6X4	Plywood 6' x 4' (1.83 x 1.22 m)	72 lbs. (48 kg)



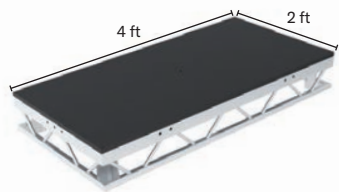
DECK 6'X2'

ITEM CODE	DESCRIPTION	WEIGHT
TC TDB6X2	Plywood 6' x 2' (1.83 x 0.61 m)	49 lbs. (22 kg)



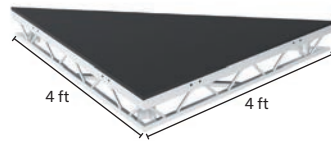
DECK 4'X4'

ITEM CODE	DESCRIPTION	WEIGHT
TC TDB4X4	Plywood 4' x 4' (1.22 x 1.22 m)	59 lbs. (27 kg)



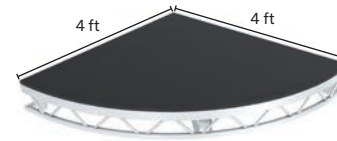
DECK 4'X2'

ITEM CODE	DESCRIPTION	WEIGHT
TC TDB4X2	Plywood 4' x 2' (1.22 x 0.61 m)	36 lbs. (16 kg)



DECK 4'X4' TRIANGLE

ITEM CODE	DESCRIPTION	WEIGHT
TC TDB4X4T	Plywood 4' x 4' (1.22 x 1.22 m)	41 lbs. (19 kg)



4' QUADRANT

ITEM CODE	DESCRIPTION	WEIGHT
TC TDB4X4Q	Plywood 1/4 circle R=4' (1.22 m)	52 lbs. (24 kg)



6' QUADRANT

ITEM CODE	DESCRIPTION	WEIGHT
TC TDB6X6Q	Plywood 1/4 circle R=6' (1.83 m)	100 lbs. (45 kg)

Legs

Achieve a wide range of deck heights with T-Dex aluminum legs, which come in fixed, adjustable, telescopic, and screw-jack versions. All quoted leg lengths are designed to place the top of the deck at the quoted height.

Fixed legs are made from 2" x 3/16" thick round tube and offered in 8" to 48" (200 to 1220 mm) lengths and can be made to suit any height within this range. Fixed length legs are provided with a black plastic insert at one end to protect the supporting surface.

Adjustable legs are similar in design to the fixed leg but include an adjustable foot that provides up to 1 1/2" (38 mm) of height adjustability and 7.5° of angle adjustability. Quoted leg lengths are based on the height being measured at the middle adjustment point of the foot.

The telescopic leg design provides a wider range

of adjustability within the same leg via the use of custom extrusions. Three leg sizes provide a range of available deck heights from 18" to 48" (457 to 1220 mm) with up to 12" (305 mm) of adjustability in the longest leg.

The screw-jack leg provides an industry standard scaffold type screw jack sitting inside a 2" x 3/16" round aluminum tube and can provide up to 18" (457 mm) of leg height adjustment. Leg lengths range from 24" to 48" (610 to 1220 mm). Deck height is measured with the scaffold jack set at the middle of its height adjustment range.

A separate optional "4 in 1" leg adapter allows one leg to support the corners of up to 4 decks, saving set-up time and reducing the total number of legs required.

Deck heights greater than 48" and rolling stages can be provided, further information upon request.





T-Dex legs are made from high strength aluminum and come in fixed, adjustable, telescopic, and screw-jack versions.

The optional “4 in 1” leg adapter allows one leg to support the corners of up to four decks, saving set-up time and reducing the total number of legs required.

4-in-1 Leg Adapter

4-IN-1 LEG ADAPTER

Allows one leg to support the corners of up to 4 decks.

ITEM CODE	WEIGHT
TC TDLEG-421	4 lbs. (1.80 kg)



Leg Types

FIXED

2" x 3/16" aluminum tube fitted with a black plastic insert at one end.



ITEM CODE	DESCRIPTION	HEIGHT OPTIONS
TC TDLEGFXX	Fixed leg	8" to 48" (457 to 1220 mm)

ADJUSTABLE

2" x 3/16" aluminum tube fitted with an adjustable foot at one end.



ITEM CODE	DESCRIPTION	HEIGHT OPTIONS
TC TDLEGAXX	Adjustable leg	8" to 48" (457 to 1220 mm)

TELESCOPIC

Custom aluminum extrusion with a black plastic foot at one end.



ITEM CODE	DESCRIPTION	HEIGHT OPTIONS
TC TDLEGT24	Telescopic leg	18" to 24" (457 to 610 mm)
TC TDLEGT36	Telescopic leg	24" to 36" (610 to 914 mm)
TC TDLEGT48	Telescopic leg	36" to 48" (914 to 1220 mm)

SCREW-JACK

2" x 3/16" aluminum tube supplied with a scaffold type screw-jack.



ITEM CODE	DESCRIPTION	HEIGHT OPTIONS
TC TDLEGSXX	Screw-jack leg	24" to 48" (610 to 1220 mm)

Handrails & Guardrails

Increase the safety and convenience of your T-Dex stage with the addition of aluminum handrails and guardrails.





T-Dex Handrails & Guardrails



The T-Dex range includes both handrails for use in professional environments and guardrails recommended for when public access is required. Both are made from high-strength welded aluminum and are provided with all required hardware. Both designs provide a barrier height of 43½” (1105 mm) measured from the top of the deck to the top of the rail.

Custom design handrails and guardrails are available upon request and can also be powder-coated if required.

Handrails



8' HANDRAIL

ITEM CODE	DESCRIPTION	WEIGHT
TC TDHR8	8' Handrail	20 lbs. (9 kg)

Supplied with connection bolts



6' HANDRAIL

ITEM CODE	DESCRIPTION	WEIGHT
TC TDHR6	6' Handrail	17 lbs. (8 kg)

Supplied with connection bolts



4' HANDRAIL

ITEM CODE	DESCRIPTION	WEIGHT
TC TDHR4	4' Handrail	15 lbs. (7 kg)

Supplied with connection bolts



2' HANDRAIL

ITEM CODE	DESCRIPTION	WEIGHT
TC TDHR2	2' Handrail	8 lbs. (4 kg)

Supplied with connection bolts

Guardrails



8' GUARDRAIL

ITEM CODE	DESCRIPTION	WEIGHT
TC TDGR8	8' Guardrail	52 lbs. (24 kg)

Supplied with connection bolts



6' GUARDRAIL

ITEM CODE	DESCRIPTION	WEIGHT
TC TDGR6	6' Guardrail	41 lbs. (19 kg)

Supplied with connection bolts



4' GUARDRAIL

ITEM CODE	DESCRIPTION	WEIGHT
TC TDGR4	4' Guardrail	31 lbs. (14 kg)

Supplied with connection bolts



2' GUARDRAIL

ITEM CODE	DESCRIPTION	WEIGHT
TC TDGR2	2' Guardrail	18 lbs. (8 kg)

Supplied with connection bolts

Stairs

Provide easy access to your stage with the addition of a set of T-Dex stairs.

T-Dex stairs come complete with handrails and are adjustable in height to provide maximum inventory flexibility, with two versions covering a total stage height range of 24" to 59" (500 to 1500 mm).

Custom stairs and loading ramps available upon request.



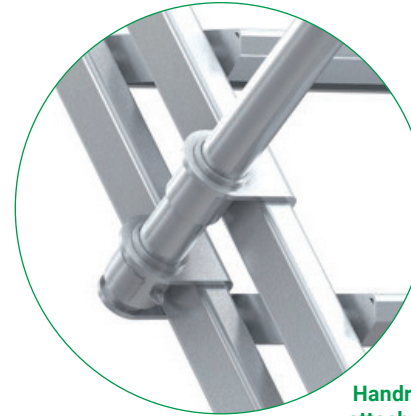
T-DEX 
by  **TOMCAT**



T-Dex Stairs



T-Dex stairs are adjustable and come in two different sizes to cover a stage height range of 24" to 59" (500 to 1500 mm). Made from aluminum they weigh considerably less than steel equivalents.



Handrail to stair attachment point



Side view of top step

5-Step Adjustable Stairs 24" to 39"



ITEM CODE	DESCRIPTION	WEIGHT
TC TDSTA-0600-1000	Adjustable - 5-Step - 24"-39" (600 - 1000 mm) including handrails	77 lbs. (35 kg)

7-Step Adjustable Stairs 39" to 59"



ITEM CODE	DESCRIPTION	WEIGHT
TC TDSTA-1000-1500	Adjustable - 7-Step - 39" to 59" including handrails	102 lbs. (46 kg)

Crowd Barriers

TOMCAT's modular crowd barrier systems are designed with both sides of the barrier in mind.

People are the lifeblood of the entertainment business. The more people that come to your event, the happier you are, and the more successful your event will be. But when you have a larger amount of attendees, you have an increased need for tools

that help you organize, segregate, block and contain. Enter the TOMCAT modular crowd barrier system.

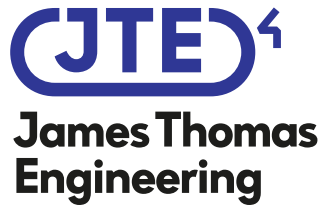
TOMCAT has a large array of barriers that have been designed with both you and event attendees in mind. TOMCAT knows that people on both sides of the barrier must be offered comfort, convenience, safety and security.




Please contact us for our full crowd barrier catalog.



Area Four Industries



T-DEX



by **TOMCAT**



Data valid as of October 24, 2024



TOMCAT USA, Inc.
5427 N. National Dr.
Knoxville, TN 37914

www.tomcatglobal.com
sales@tomcatusa.com
1-800-298-7877

www.a4direct.us
info@a4direct.us
1-800-411-0065

West Coast Sales Office & Warehouse
950 Lawrence Dr. Suite B
Thousand Oaks, CA 91320

